



Caledonian

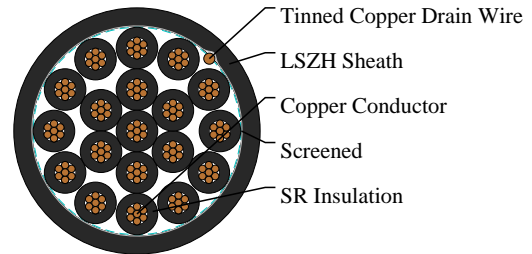
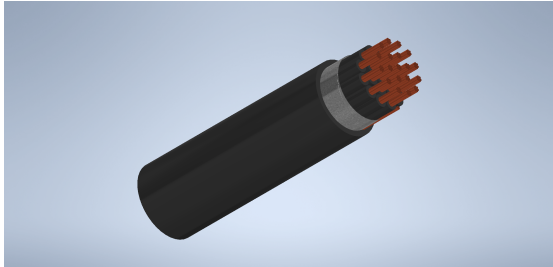
FIREFLIX Fire Resistant Power & Control Cables

www.caledonian-cables.co.uk

sales@caledonian-cables.co.uk

300/500V SR Insulated, LSZH Sheathed, Screened Power Cables to BS 7629-1 (19 Cores)

FFX200 05SOZ1-U/R PH30/PH60 (CU/SR/OSCR/LSZH 300/500V Class 1/2)



APPLICATIONS

- BS 5266-1 for emergency lighting of premises.
- BS 5839-1 for fire detection and fire alarm systems in and around building.
- BS 5839-8 for voice alarm systems.
- BS 5839-9 for emergency voice communication systems.

STANDARDS

Basic design to BS 7629-1:2015

APPROVALS

TUV Certification(B 098200 0035 Rev.00)

FIRE PERFORMANCE

Circuit Integrity	BS 6387; BS EN 50200
Flame Retardance (Single vertical wire or cable test)	IEC 60332-1-2; EN 60332-1-2
Reduced Fire Propagation (Vertically-mounted bundled wires & cables test) I	IEC 60332-3-24; EN 60332-3-24
Halogen Free	IEC 60754-1; EN 50267-2-1
No Corrosive Gas Emission	IEC 60754-2; EN 50267-2-2
Minimum Smoke Emission	IEC 61034-2; EN 61034-2

VOLTAGE RATING

300/500V

CABLE CONSTRUCTION

- Conductor: Copper conductor according to BS EN 60228 class 1/2.
- Insulation: Fire resistant special ceramized silicone rubber compound type EI 2 as per BS EN 50363-1.
- Screened: One or more metallic or laminated metallic tape(s) shall be applied, either longitudinally or helically or a combination of both, with the metallic element in contact with the uninsulated circuit protective conductor or drain wire.



Caledonian

FIREFLIX Fire Resistant Power & Control Cables

www.caledonian-cables.co.uk

sales@caledonian-cables.co.uk

Circuit Protective Conductor: Uninsulated tinned copper conductor of the same section and class as the insulated conductors in the two, three and four cores cables.

Sheath: Extruded LSZH type LTS 3 according to BS 7655-6.1.

Insulation Option: UV resistance, hydrocarbon resistance, oil resistance, anti-rodent and anti-termite properties can be offered as option.

COLOUR CODE

7, 12 and 19 cores+uninsulated drain wire: Numbers 1, 2, 3, 4, 5, 6, 7 and upwards or, for identification by colour, an identical colour (excluding brown and black), except for two adjacent cores in each layer distinctively coloured brown and black.

PHYSICAL AND THERMAL PROPERTIES

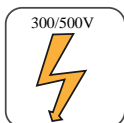
Maximum temperature range during operation: 70°C

Maximum short circuit temperature (5 Seconds): 250°C

Minimum bending radius: 6 x Overall Diameter

DIMENSION AND PARAMETERS

No. of Cores × Cross-sectional Area	Conductor Class	Nominal Insulation Thickness	Nominal Sheath Thickness	Approx. Overall Diameter	Approx. Weight
No. x mm ²		mm	mm	mm	kg/km
19x1.5	1/2	0.7	1.3	19.0	617



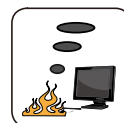
Rated voltage



BS 7629-1



Flame Retardancy
IEC 60332-1-2



Low Corrosivity
IEC 60754-2



Low Smoke Emission
IEC 61034-2